



The Palermo

2,805 sq.ft.

727 Carnelian Crescent
HORIZON SERIES 44' LOT
ELEVATION B

Riverside
South

\$629,900 COLOURS & FINISHES
TO BE SELECTED

ENERGY STAR® Certified Optional 4 Bedroom Layout with 3½ Baths; including a Jack & Jill. Oak Stairs to Second Floor and Main Floor Open to Basement with Oak Railing. Finished Basement Games Room & Upgraded 3'x 5' Tiled Shower in Ensuite. Granite in Kitchen, Central Air Conditioning and Humidifier as Standard.

NEW STANDARD FEATURES: Granite in Kitchen, Central Air Conditioning & Humidifier

BONUS INCLUDED IN PRICE: Smooth Ceilings on Main Floor & Second Floor, Finished Basement Games Room (as per plan) & 3' x 4' Shower in Ensuite with Tiled Walls (acrylic base and glass pivot door)



All illustrations are artist concepts. Homes may be left of right versions. All dimensions are approximate. Actual usable floor space may vary from stated area. Structural/mechanical requirements may result in dimensional revisions and/or adjustments to layout. Plans and specifications are subject to change without notice. Exterior elevations are determined by Urbandale and may vary. ENERGY STAR® is an official mark of Natural Resources Canada. Used with permission. E. & O. E. 29/03/17

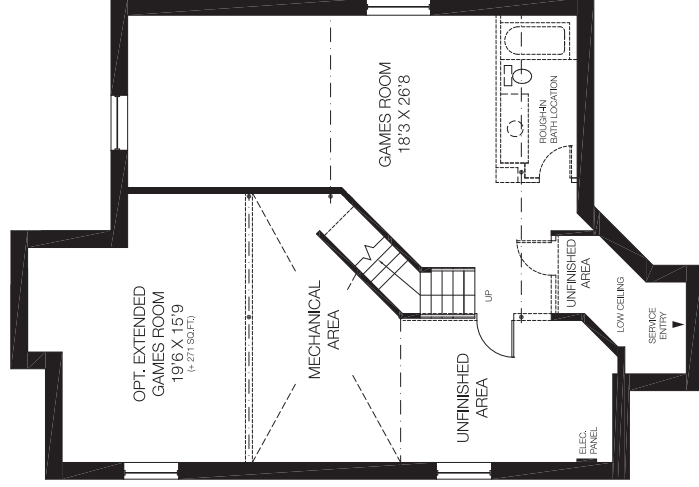
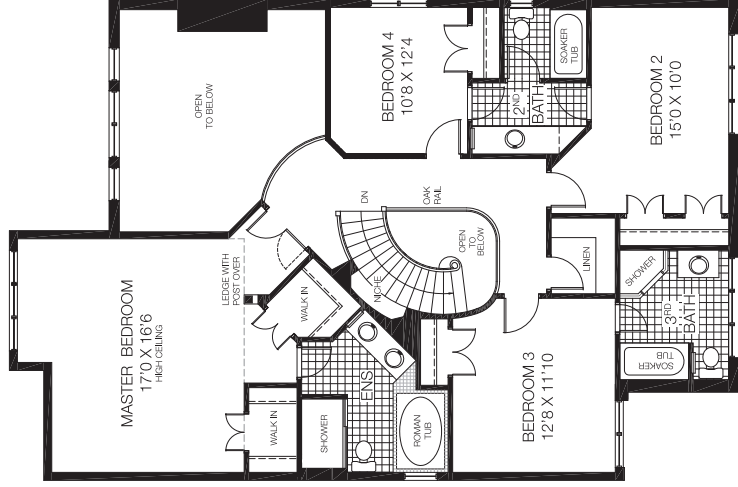
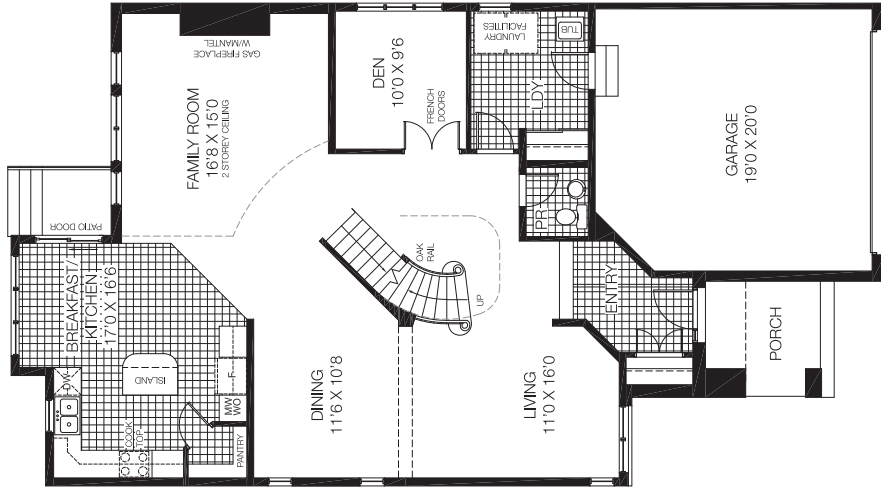


The Palermo

2,805 sq.ft.

727 Carnelian Crescent
HORIZON SERIES 44' LOT
 ELEVATION B

Riverside
 South



GROUND FLOOR

BEDROOM FLOOR

BASEMENT
 FINISHED AREA 492 sq.ft.



All illustrations are artist concepts. Homes may be left or right versions. All dimensions are approximate. Actual usable floor space may vary from stated area. Structural/mechanical requirements may result in dimensional revisions and/or adjustments to layout including bulkheads. Brick sides and rears are subject to site specifications, please see Sales Consultant for details. Plans and specifications are subject to change without notice. Exterior elevations are determined by Urbandale and may vary. The ENERGY STAR® for New Homes Standard is administered and promoted in Canada by Natural Resources Canada. E. & O. E. 28/03/17



Urbandale
 CONSTRUCTION