



The Sapphire II

2, 206 sq.ft.

160 Cambie Road
HORIZON SERIES 35' LOT
ELEVATION D

Riverside
South

\$536,900 COLOURS & FINISHES
TO BE SELECTED

**ENERGY STAR® Certified Standard 4 Bedroom Layout
with Additional Sink in Ensuite, Finished Basement Games Room
& Upgraded 3' x 5' Tiled Shower in Ensuite.**

NEW STANDARD FEATURES: Granite in Kitchen, Central Air Conditioning & Humidifier

BONUS INCLUDED IN PRICE: Smooth Ceilings on Main Floor & Second Floor, Finished Basement Games Room (as per plan) & 3' x 4' Shower in Ensuite with Tiled Walls (acrylic base and glass pivot door)



All illustrations are artist concepts. Homes may be left of right versions. All dimensions are approximate. Actual usable floor space may vary from stated area. Structural/mechanical requirements may result in dimensional revisions and/or adjustments to layout. Plans and specifications are subject to change without notice. Exterior elevations are determined by Urbandale and may vary. ENERGY STAR® is an official mark of Natural Resources Canada. Used with permission. E. & O. E. 10/11/16

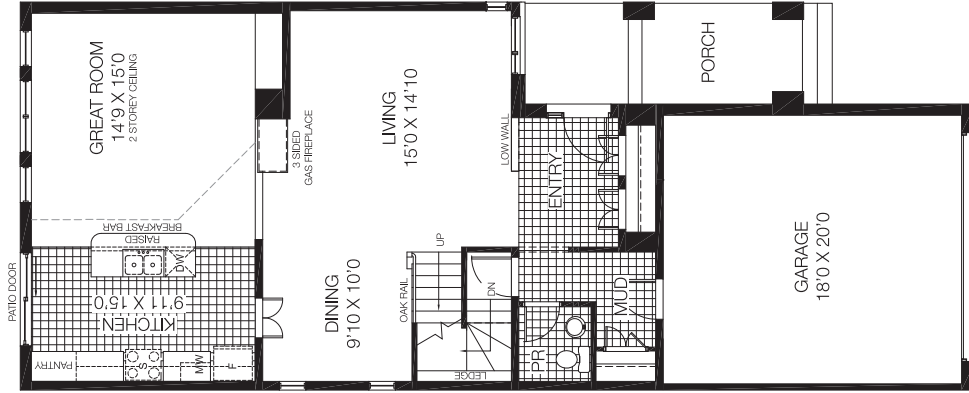


The Sapphire II

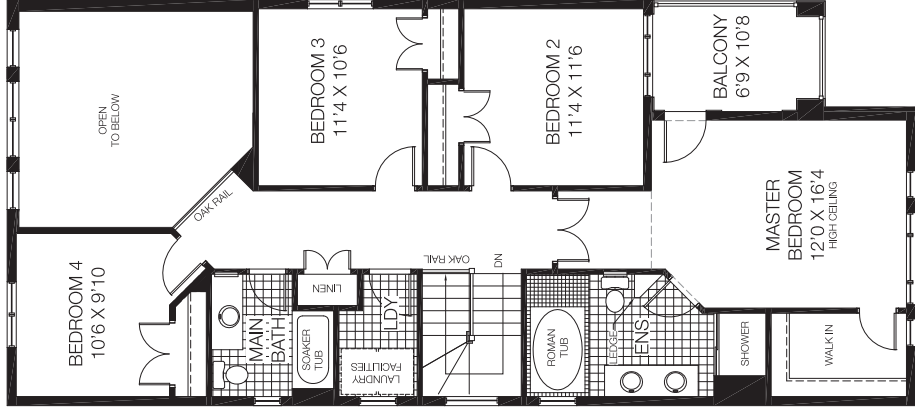
2,206 sq.ft.

160 Cambie Road
HORIZON SERIES 35' LOT
 ELEVATION D

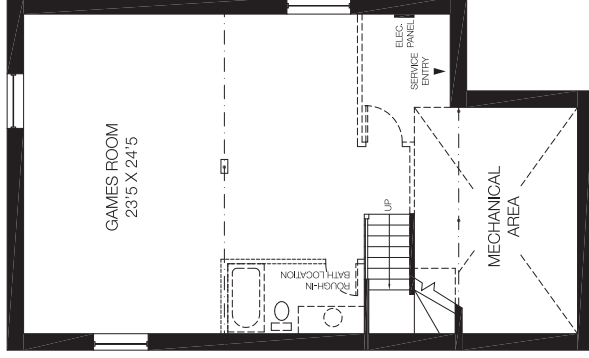
Riverside
 South



GROUND FLOOR



BEDROOM FLOOR



BASEMENT
 FINISHED AREA 621 sq.ft.



All illustrations are artist concepts. Homes may be left or right versions. All dimensions are approximate. Actual usable floor space may vary from stated area. Structural/mechanical requirements may result in dimensional revisions and/or adjustments to layout including bulkheads. Brick sides and rears are subject to site specifications, please see Sales Consultant for details. Plans and specifications are subject to change without notice. Exterior elevations are determined by Urbandale and may vary. The ENERGY STAR® for New Homes Standard is administered and promoted in Canada by Natural Resources Canada. E. & C. E. 10/11/16

