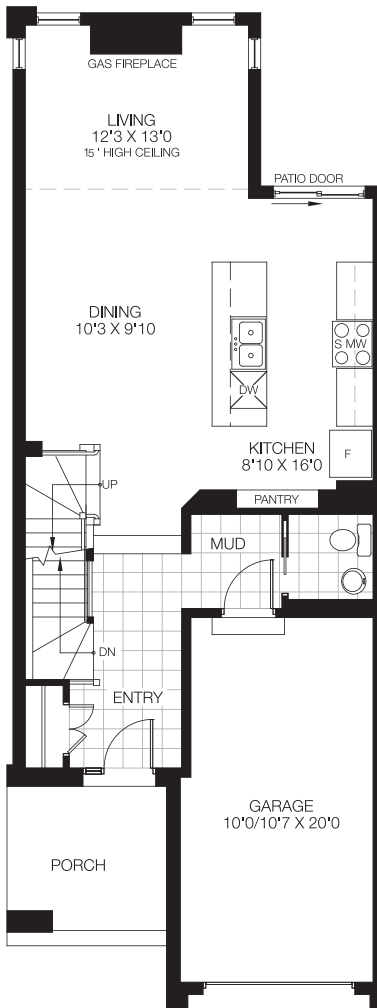
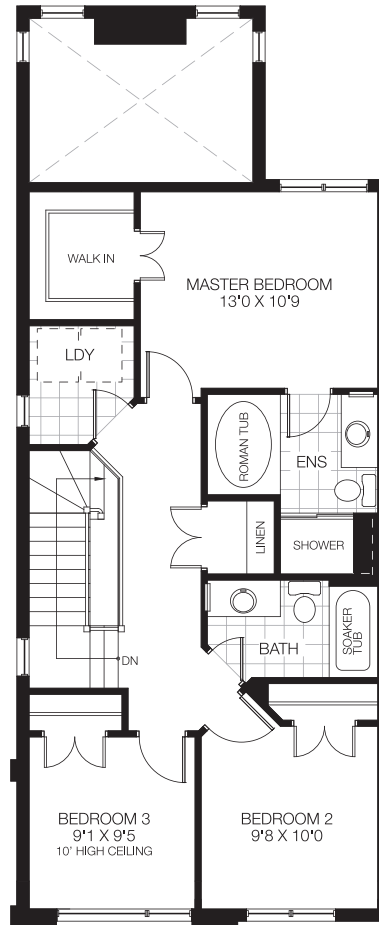


CALYPSO

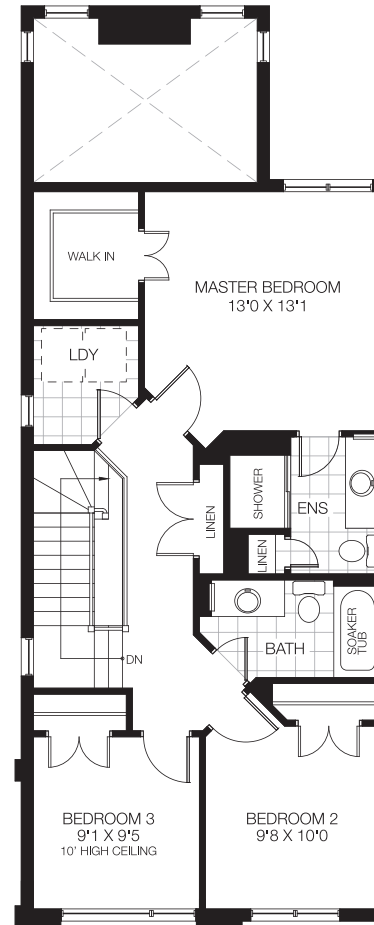
1,770 sq.ft. End Unit



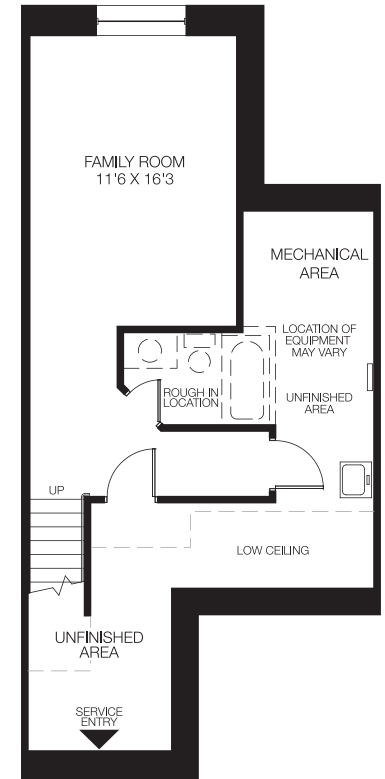
GROUND FLOOR



BEDROOM FLOOR
3 BEDROOMS W/4PC ENSUITE



OPT 1. BEDROOM FLOOR
3 BEDROOMS W/3PC ENSUITE



BASEMENT
FINISHED AREA 320 SQ.FT.



All dimensions are approximate. Actual usable floor space may vary from stated area. Structural/mechanical requirements may result in dimensional revisions and/or adjustments. Brick sides and rears are subject to site specifications. Plans and specifications are subject to change without notice. The ENERGY STAR® for New Homes Standard is administered and promoted in Canada by Natural Resources Canada. E. & O. E. 04/03/19

