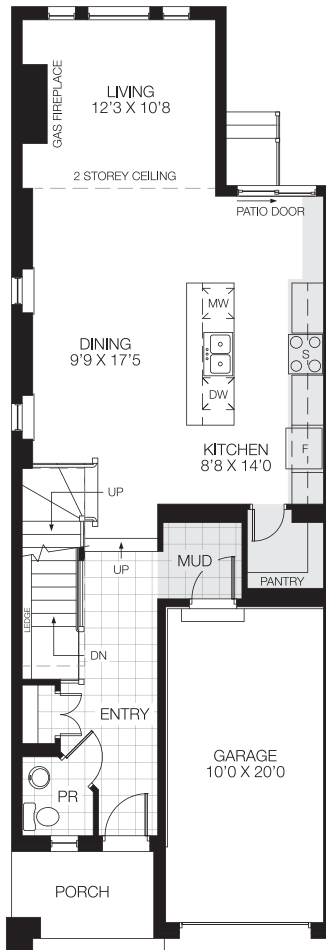
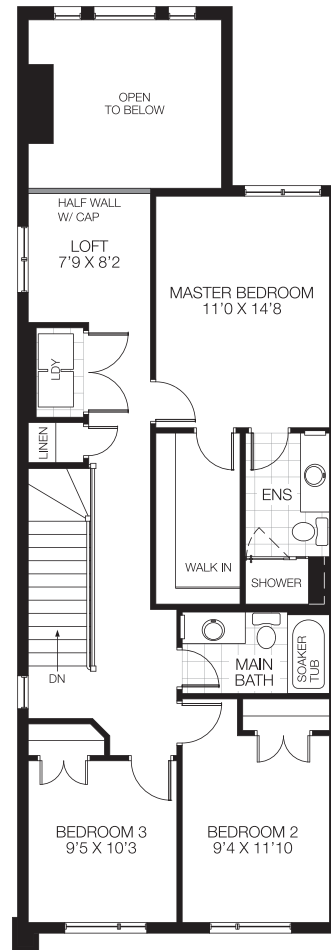


Edison 2,092 sq.ft. End Unit

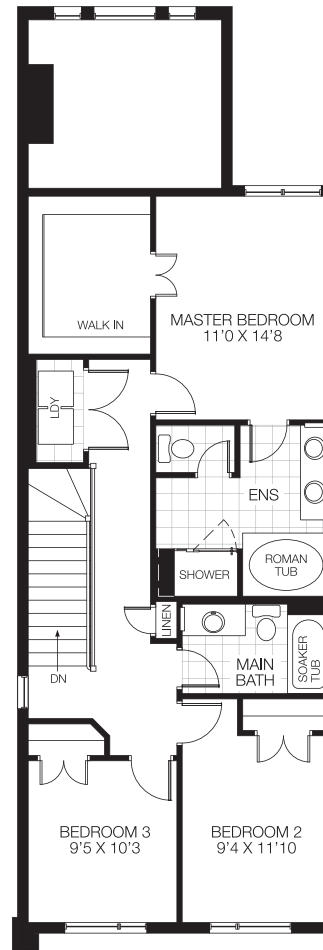


Ground floor

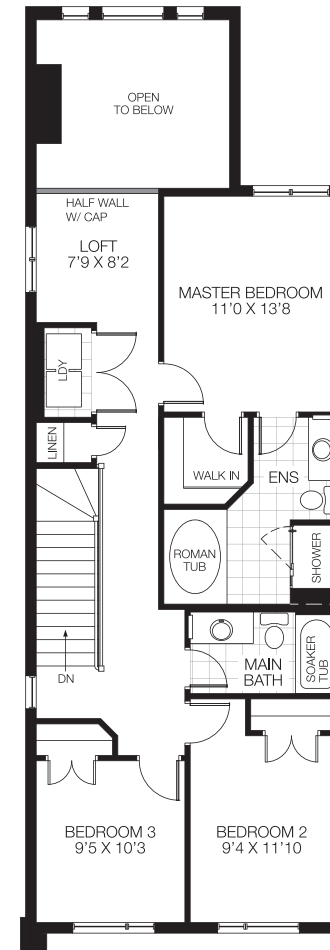
Bulkhead or Drop Ceiling



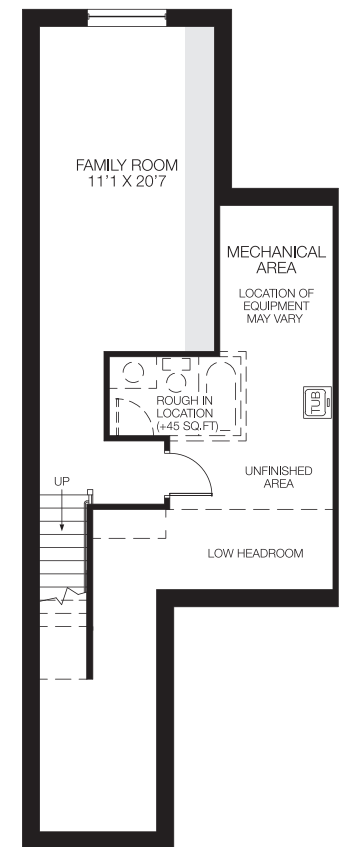
Bedroom floor
3 bedrooms w/loft



Opt. 1 Bedroom floor
3 bedrooms w/luxury ensuite



Opt. 2 Bedroom floor
3 bedrooms w/loft & 4pc ensuite



Basement
Finished area 361 sq.ft.



All dimensions are approximate. Actual usable floor space may vary from stated area. Structural/mechanical requirements may result in dimensional revisions and/or adjustments. Brick sides and rears are subject to site specifications. Plans and specifications are subject to change without notice. The ENERGY STAR® for New Homes Standard is administered and promoted in Canada by Natural Resources Canada. E. & O. E. 11/08/20

