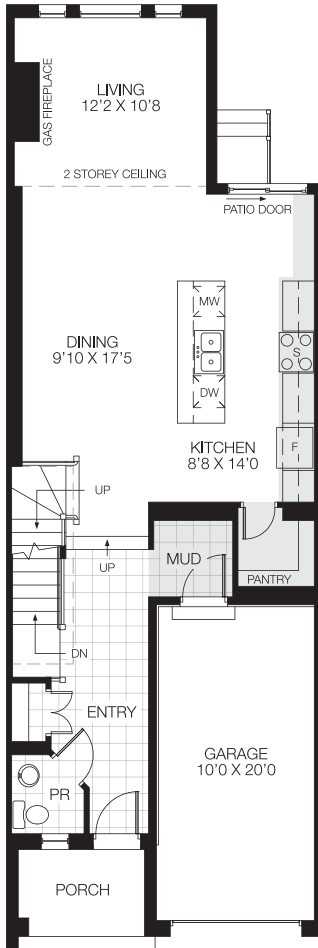
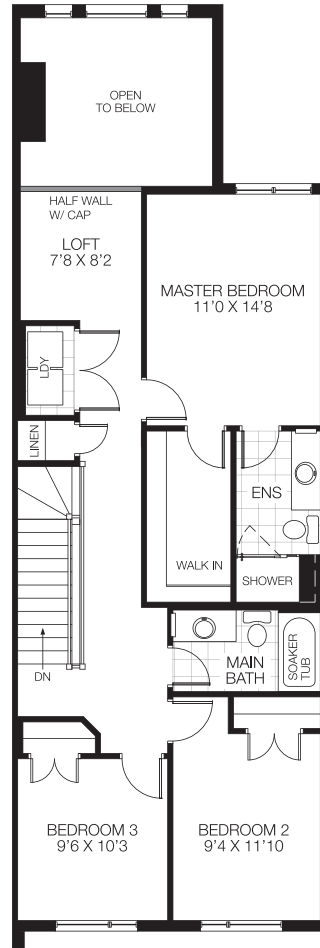


# Edison 2,092 sq.ft. Interior Unit

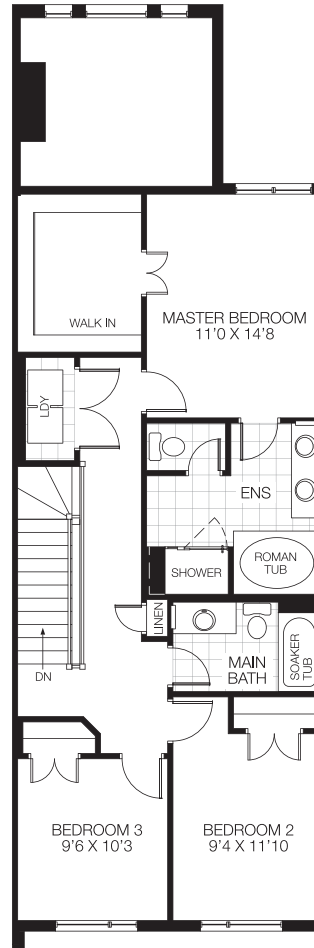


**Ground floor**

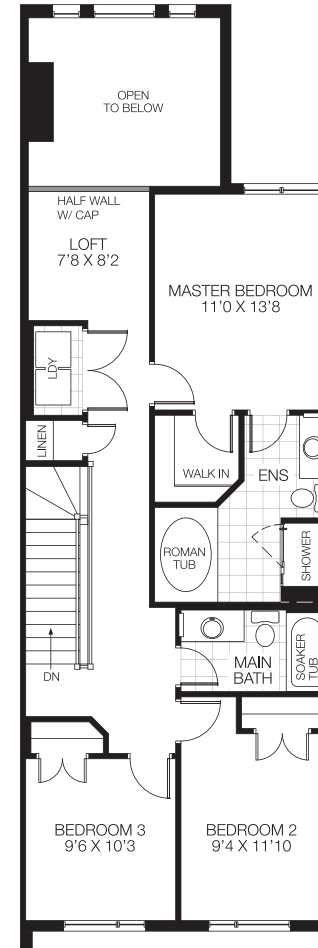
Bulkhead or Drop Ceiling



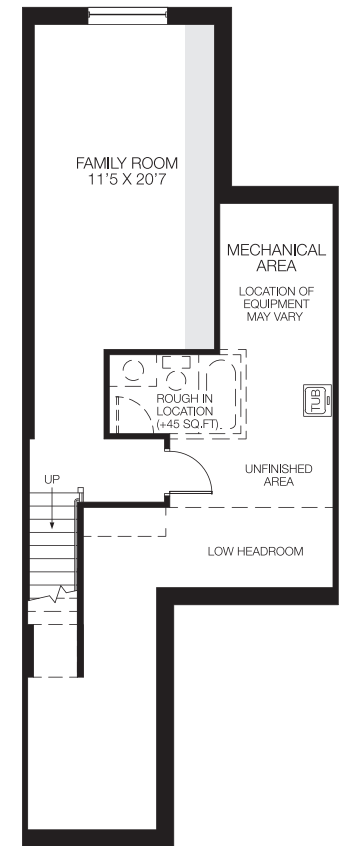
**Bedroom floor**  
3 bedrooms w/loft



**Opt. 1 Bedroom floor**  
3 bedrooms w/luxury ensuite



**Opt. 2 Bedroom floor**  
3 bedrooms w/loft & 4pc ensuite



**Basement**  
Finished area 361 sq.ft.



All dimensions are approximate. Actual usable floor space may vary from stated area. Structural/mechanical requirements may result in dimensional revisions and/or adjustments. Brick sides and rears are subject to site specifications. Plans and specifications are subject to change without notice. The ENERGY STAR® for New Homes Standard is administered and promoted in Canada by Natural Resources Canada. E. & O. E. 11/08/20

