

## ATLANTIS II

2443 SQ. FT.

### Riverside South

792 Solarium Avenue  
Block 19 | Phase 115-3  
Lot 74 | End Unit

# \$789,900

## MOVE-IN READY

### Design Centre Finished Home

Standard 3 Bedroom and 2.5 Bath with Loft  
layout includes

Finished Basement Bathroom

Kitchen Range Hood and Sink

Sink in Bath 1, Bath 2 and Basement Bath

Toilet in Powder Room

### Contact

Leigh-Ann Shearer | Sales Consultant

E: [riversouth@urbandale.com](mailto:riversouth@urbandale.com)

P: 613-822-2190



All illustrations are artist concepts. Homes may be left or right versions. All dimensions are approximate. Actual usable space may vary from stated area. Structural/mechanical requirements may result in dimensional revisions and/or adjustments to layout. Plans and specifications are subject to change without notice. Exterior elevations are determined by Urbandale and may vary. See the Sales Consultant for closing date details. ENERGY STAR® is an official mark of Natural Resources Canada. Used with permission. E. & O. E. 29/01/2025



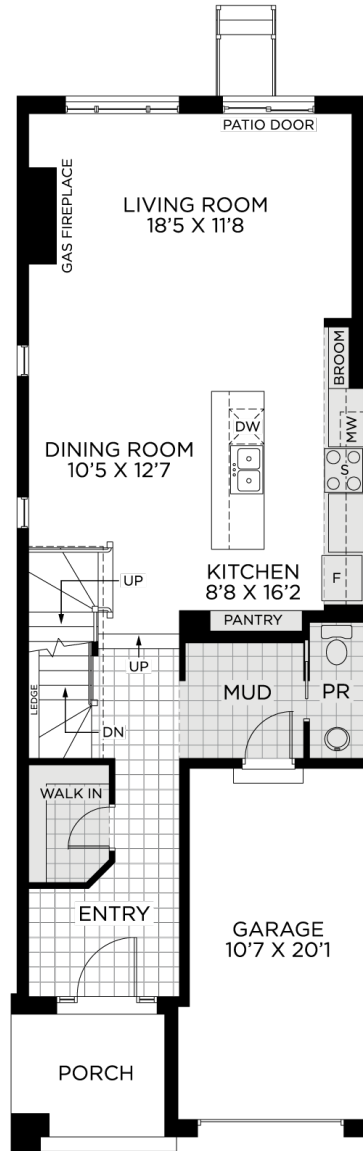
# ATLANTIS II

2443 SQ. FT.

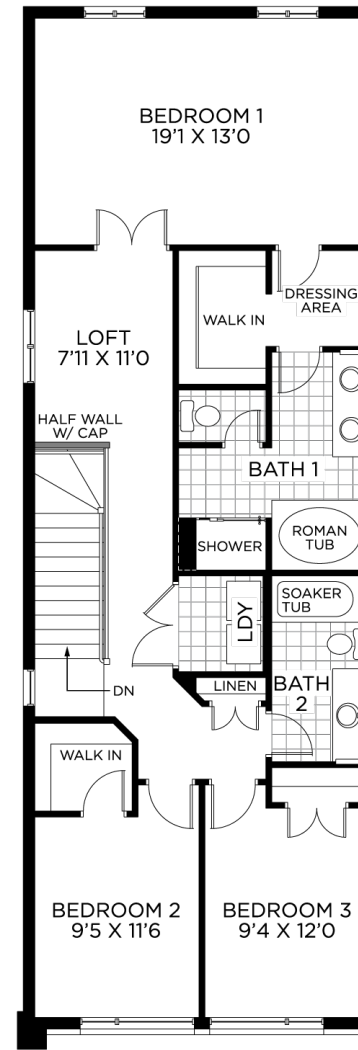
## Riverside South

792 Solarium Avenue  
Block 19 | Phase 115-3  
Lot 74 | End Unit

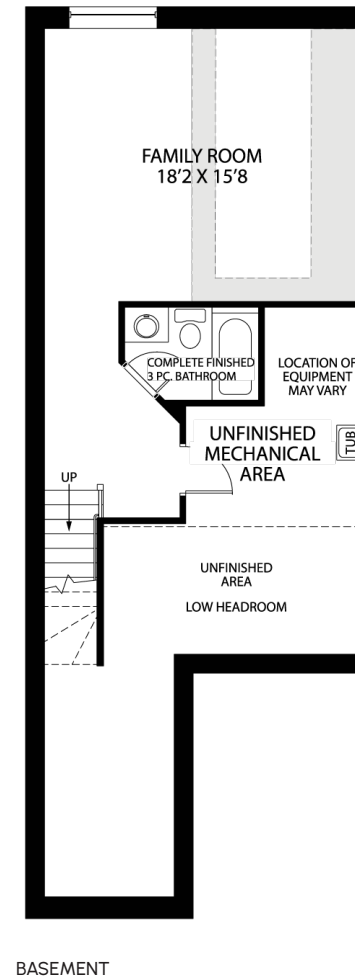
# FLOORPLANS



GROUND FLOOR



BEDROOM FLOOR



BASEMENT



All illustrations are artist concepts. Homes may be left or right versions. All dimensions are approximate. Actual usable space may vary from stated area. Structural/mechanical requirements may result in dimensional revisions and/or adjustments to layout. Plans and specifications are subject to change without notice. Exterior elevations are determined by Urbandale and may vary. See the Sales Consultant for closing date details. ENERGY STAR® is an official mark of Natural Resources Canada. Used with permission. E. & O. E. 29/01/2025



# ATLANTIS II

2443 SQ. FT.

## RIVERSIDE SOUTH

792 Solarium Avenue  
Block 19 | Phase 115-3  
Lot 74 | End Unit

**CURATED FINISHES BY THE  
URBAN DALE DESIGN CENTRE**  
*FLOORING & PAINT THROUGHOUT*

1



2



3



4



**1**  
**HARDWOOD**  
Lauzon Cafe au Lait

**2**  
**ENTRY, POWDER, LAUNDRY & MUD-  
ROOM FLOOR TILE**  
CENTURA Calacatta Borghini (Matte)  
12x24

**3**  
**CARPET**  
Beach Shell

**4**  
**PAINT**  
Benjamin Moore  
Decorator's White

# ATLANTIS II

2443 SQ. FT.

## RIVERSIDE SOUTH

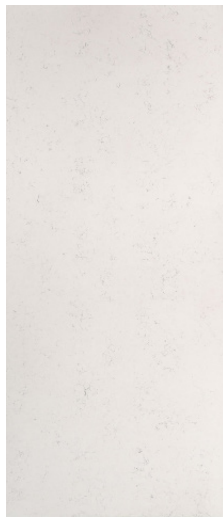
792 Solarium Avenue  
Block 19 | Phase 115-3  
Lot 74 | End Unit

## CURATED FINISHES BY THE URBAN DALE DESIGN CENTRE KITCHEN

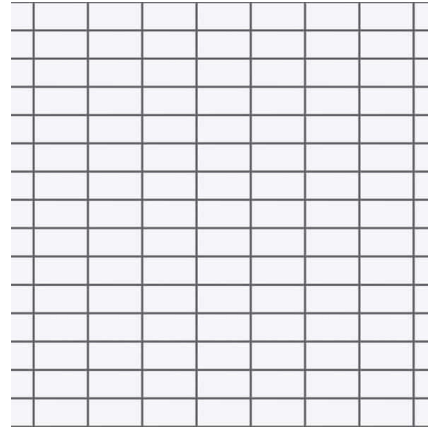
1



2



3



4



5



6



1

### CABINETRY

Perth Cotton Mist

2

### COUNTERTOP

Carrara Marmi

3

### BACKSPLASH

CERATEC Essential  
Subway Bianco (Glossy)  
3x6

4

### FAUCET

Standard

5

### RANGE HOOD

Cyclone Canopy Range  
Hood Stainless Steel

6

### SINK

Blanco Quatrus R15 U Modern  
Super Single Bowl

# ATLANTIS II

2443 SQ. FT.

## RIVERSIDE SOUTH

792 Solarium Avenue  
Block 19 | Phase 115-3  
Lot 74 | End Unit

## CURATED FINISHES BY THE URBAN DALE DESIGN CENTRE BATH 1, 2, & BASEMENT BATH

1



2



3



4



5



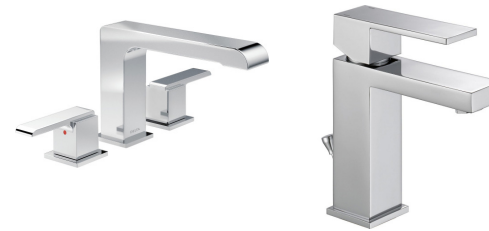
6



9



7



8



**1 FLOOR TILE**  
CENTURA Calacatta  
Borghini (Matte)  
12x24

**2 WALL TILE**  
Euro Soho Loft Grey  
(Matte)  
4x16

**3 COUNTERTOP**  
Meridian Grey

**4 CABINTRY**  
Perth Cotton Mist

**5 SHOWER TRIM**  
Standard Chrome

**6 TOILET**  
Contrac Crista

**7 FAUCET(S)**  
Standard Chrome

**8 ACCESSORIES**  
Standard Chrome

**9 SINK**  
Contrac Colett Regular  
Undermount

# ATLANTIS II

2443 SQ. FT.

## RIVERSIDE SOUTH

792 Solarium Avenue  
Block 19 | Phase 115-3  
Lot 74 | End Unit

## CURATED FINISHES BY THE URBAN DALE DESIGN CENTRE POWDER ROOM

1



**1**  
SINK  
Standard Pedestal

2



**2**  
TOILET  
Contrac Crista

3



**3**  
FAUCET  
Standard Chrome

4



**4**  
ACCESSORIES  
Standard Chrome

# ATLANTIS II

2443 SQ. FT.

## RIVERSIDE SOUTH

792 Solarium Avenue  
Block 19 | Phase 115-3  
Lot 74 | End Unit

## CURATED FINISHES BY THE URBAN DALE DESIGN CENTRE FIREPLACE & DOORS

1



**1**  
FIREPLACE  
Standard  
36"

2



**2**  
INTERIOR DOORS  
Standard

3



**3**  
EXTERIOR HARDWARE  
Standard

4



**4**  
INTERIOR HARDWARE  
Standard