



DARWIN

2,136 SQ. FT.

101 Bristol Crescent
END UNIT
Lot 1 - Block 1

THE
creek

637,900

MOVE-IN READY

Design Centre Finished Home

Standard 3 Bedroom with 2.5 Bath
layout includes

3x5 shower in ensuite

Hardwood staircase from Main Floor to Bedroom Level

CONTACT INFORMATION

Morgan Patmore | Sales Consultant

E: thecreek@urbandale.com

P: 613-695-3011

All illustrations are artist concepts and should be used as reference only. Plans and specifications are subject to change without notice. All dimensions are approximate. Actual usable floor space may vary from stated area. Structural/mechanical requirements may result in bulkheads, dimensional revisions and/or minor adjustments that follow Taron regulations. Exterior steps and landings, including garage, may vary with site grading. Brick sides and rears are subject to site specifications. R-2000 is an official mark of Natural Resources Canada. Used with permission. E. & O. E. 03/11/23



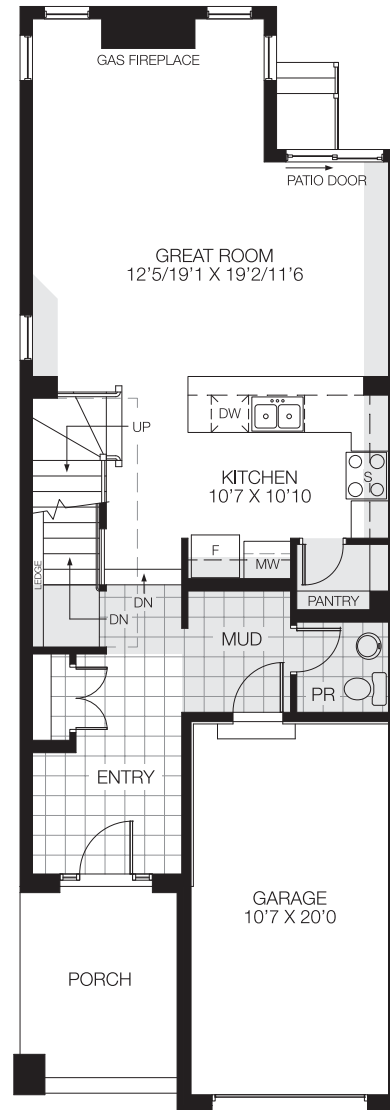
DARWIN

2,136 SQ. FT.

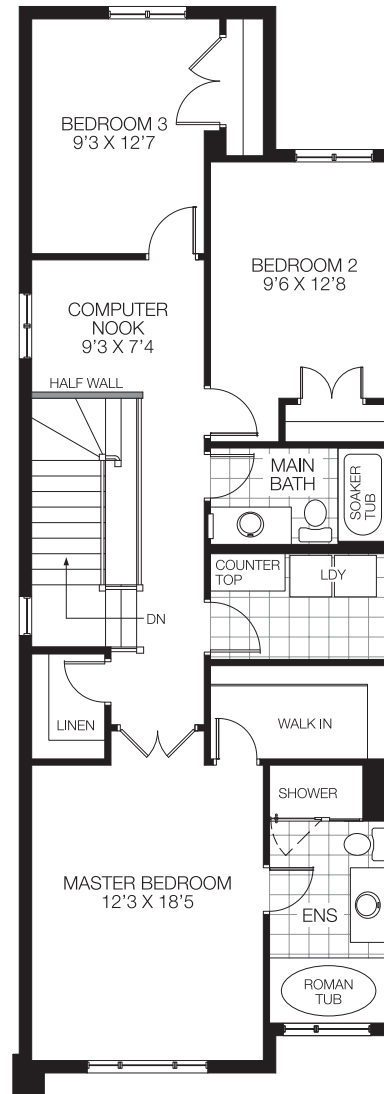
101 Bristol Crescent
END UNIT
Lot 1 - Block 1



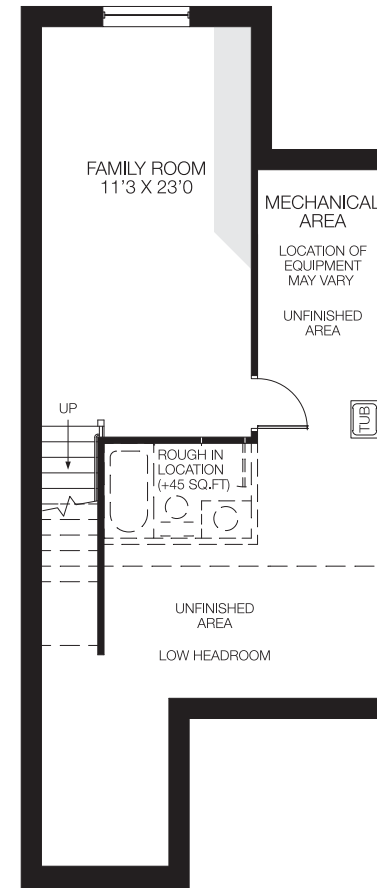
FLOORPLANS



GROUND FLOOR



BEDROOM FLOOR



BASEMENT
FINISHED AREA 320 SQ.FT.



All illustrations are artist concepts and should be used as reference only. Plans and specifications are subject to change without notice. All dimensions are approximate. Actual usable floor space may vary from stated area. Structural/mechanical requirements may result in bulkheads, dimensional revisions and/or minor adjustments that follow Tarion regulations. Exterior steps and landings, including garage, may vary with site grading. Brick sides and rears are subject to site specifications. R-2000 is an official mark of Natural Resources Canada. Used with permission. E. & O. E. 03/11/23



DARWIN

2,136 SQ. FT.

101 Bristol Crescent
END UNIT
Lot 1 - Block 1

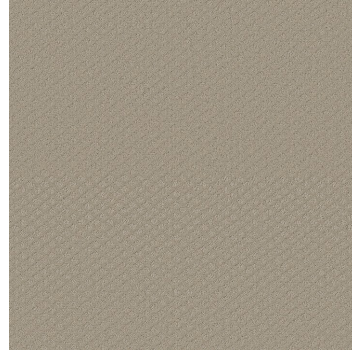


FLOORING AND PAINT THROUGHOUT

1



2



3



4



5



1
HARDWOOD
Lauzon Expert Essential -
Smokey Grey (*Matte*)
INCLUDES 2ND FLOOR HALL AND LOFT
3-1/8"

2
CARPET
Shaw - Finley Creek -
Studio Taupe

3
ENTRY & MUDROOM FLOOR TILE
Olympia Madison - White (*Matte*)
12 x 24

4
**BATHROOMS, POWDER ROOM &
LAUNDRY ROOM FLOOR TILE**
Olympia Madison - White (*Matte*)
12 x 24

5
PAINT
Benjamin Moore - Paper White
(OC-55)

DARWIN

2,136 SQ. FT.

101 Bristol Crescent
END UNIT
Lot 1 - Block 1



KITCHEN

1



2



3



4



5



3



1
RANGE HOOD
SCB-51430 - 30" Stainless
Steel Cyclone canopy

2
KITCHEN BACKSPLASH
Olympia - Arctic White
(Matte)
2 x 8

3
COUNTER
Calico White

4
CABINTRY
Prairie - Vanilla Orchid

5
KITCHEN FAUCET
Delta Osler Stainless

6
SINK
Blanco Quatrus R15 U modern
super single

DARWIN

2,136 SQ. FT.

101 Bristol Crescent
END UNIT
Lot 1 - Block 1



BATH 1

1



2



3



4



5



6



7



8



9



1
FLOOR TILE
Olympia Madison - White
(Matte)
12 x 24

2
WALL TILE
Centura Capua - Multi Perla
Grey (Glossy)
10 x 20

3
COUNTER
Snow White

4
CABINERY
Prairie - Pieta

5
FAUCET
Standard

6
SHOWER TRIM
Standard

7
SINK
Proflo Comstock

8
TOILET
Standard

9
ACCESSORIES
Standard

DARWIN

2,136 SQ. FT.

101 Bristol Crescent
END UNIT
Lot 1 - Block 1

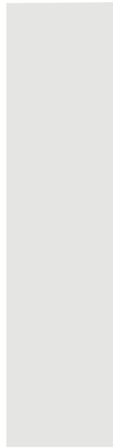


BATH 2

1



2



3



4



5



6



7



8



9



1
FLOOR TILE
Olympia Madison - White
(Matte)
12 x 24

2
WALL TILE
Euro Soho - Vintage Grey
(Glossy)
4 x 16

3
COUNTER
Snow White

4
CABINETRY
Prairie - Nizza

5
FAUCET
Standard

6
SHOWER TRIM
Standard

7
SINK
Proflo Comstock

8
TOILET
Standard

9
ACCESSORIES
Standard

DARWIN

2,136 SQ. FT.

101 Bristol Crescent
END UNIT
Lot 1 - Block 1



POWDER ROOM

1



2



3



4



5



1
FLOOR TILE
Olympia Madison - White
(Matte)
12 x 24

2
FAUCET
Standard

3
SINK
Standard

4
TOILET
Standard

5
ACCESSORIES
Standard

DARWIN

2,136 SQ. FT.

101 Bristol Crescent
END UNIT
Lot 1 - Block 1



LAUNDRY ROOM

1



2



3



1
FLOOR TILE

Olympia Madison - White
(Matte)
12 x 24

2
COUNTER

Snow White

3
CABINETRY

Amsterdam - Vanilla Orchid

DARWIN

2,136 SQ. FT.

101 Bristol Crescent
END UNIT
Lot 1 - Block 1



FIREPLACE & DOORS

1



2



3



4



1
FIREPLACE
Standard

2
INTERIOR DOORS
Standard

3
EXTERIOR HARDWARE
Standard

4
INTERIOR HARDWARE
Standard