



## DISCOVERY

2,119 SQ. FT.

## RIVERSIDE SOUTH

353 Mango Street  
Block 23 | Phase 117-1  
Lot 77 | Interior Unit

# \$729,900

Standard 3 Bedroom with 2.5 Bath  
layout includes

\$1600 in structural and electrical upgrades  
3x5 Shower in Bath 1

### Select Your Finishes at the Urbandale Design Centre

Design Centre Consultants will guide you through Urbandale's extensive range of finishes, and customize your home's interior to suit your style with a

**10K Design Centre BONUS!**

### Contact

Leigh-Ann Shearer | Sales Consultant  
E: [riversouth@urbandale.com](mailto:riversouth@urbandale.com)  
P: 613-822-2190



All illustrations are artist concepts. Homes may be left or right versions. All dimensions are approximate. Actual usable space may vary from stated area. Structural/mechanical requirements may result in dimensional revisions and/or adjustments to layout. Plans and specifications are subject to change without notice. Exterior elevations are determined by Urbandale and may vary. See the Sales Consultant for closing date details. ENERGY STAR® is an official mark of Natural Resources Canada. Used with permission. E. & O. E. 29/01/2025



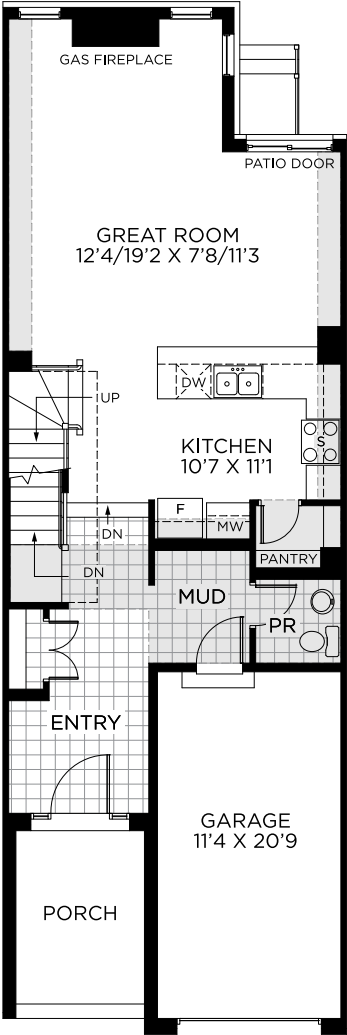
# DISCOVERY

2,119 SQ. FT.

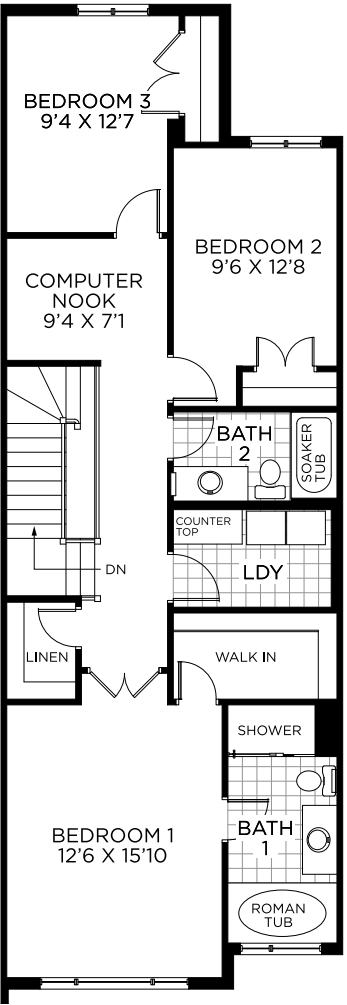
## RIVERSIDE SOUTH

353 Mango Street  
 Block 23 | Phase 117-1  
 Lot 77 | Interior Unit

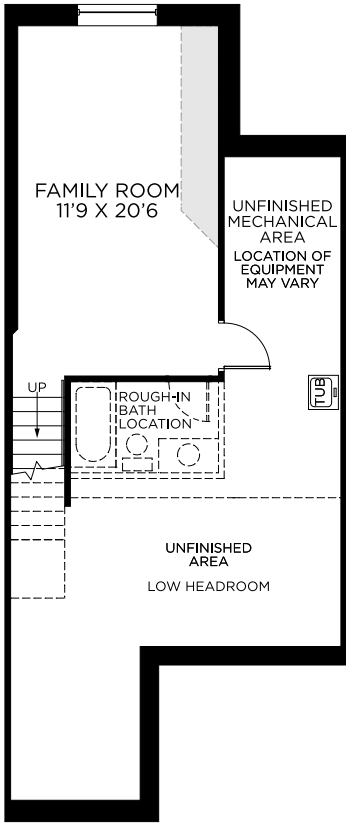
# FLOORPLANS



GROUND FLOOR



BEDROOM FLOOR



BASEMENT  
 FINISHED AREA: 297 sq. ft.



All illustrations are artist concepts. Homes may be left or right versions. All dimensions are approximate. Actual usable space may vary from stated area. Structural/mechanical requirements may result in dimensional revisions and/or adjustments to layout. Plans and specifications are subject to change without notice. Exterior elevations are determined by Urbandale and may vary. See the Sales Consultant for closing date details. ENERGY STAR® is an official mark of Natural Resources Canada. Used with permission. E. & O. E. 29/01/2025

