



ATLANTIS II

2,443 SQ. FT.

RIVERSIDE SOUTH

359 Mango Street
Block 23 | Phase 117-1
Lot 80 | End Unit

\$814,900

Optional 4 Bedroom and 2.5 Bath with Loft layout includes

\$15K in structural and electrical upgrades
3x5 Shower with glass wall return in Bath 1
36" Linear Fireplace

Oak hardwood staircase from main to bedroom floor with white risers

Select Your Finishes at the Urbandale Design Centre

Design Centre Consultants will guide you through Urbandale's extensive range of finishes, and customize your home's interior to suit your style with a

10K Design Centre BONUS!

Contact

Leigh-Ann Shearer | Sales Consultant
E: riversouth@urbandale.com
P: 613-822-2190



All illustrations are artist concepts. Homes may be left or right versions. All dimensions are approximate. Actual usable space may vary from stated area. Structural/mechanical requirements may result in dimensional revisions and/or adjustments to layout. Plans and specifications are subject to change without notice. Exterior elevations are determined by Urbandale and may vary. See the Sales Consultant for closing date details. ENERGY STAR® is an official mark of Natural Resources Canada. Used with permission. E. & O. E. 29/01/2025



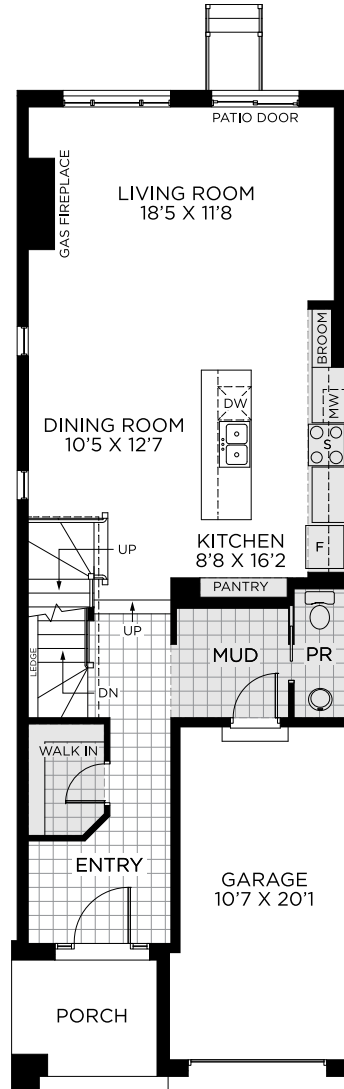
ATLANTIS II

2,443 SQ. FT.

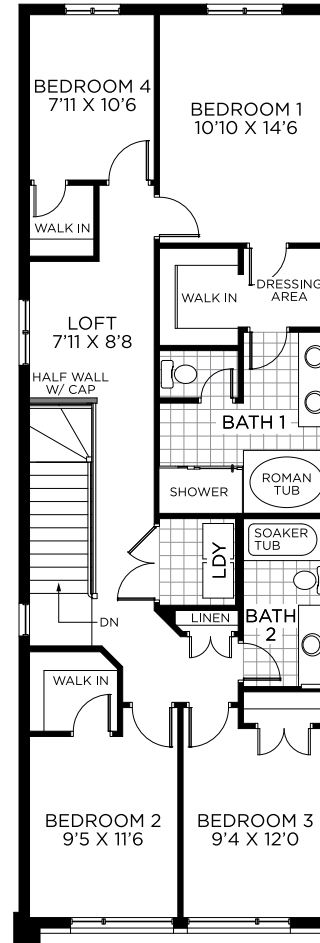
RIVERSIDE SOUTH

359 Mango Street
Block 23 | Phase 117-1
Lot 80 | End Unit

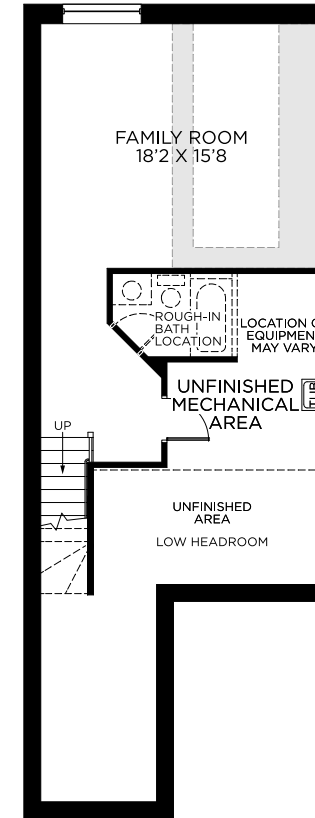
FLOORPLANS



GROUND FLOOR



BEDROOM FLOOR



BASEMENT
FINISHED BASEMENT AREA: 425 SQ. FT.



All illustrations are artist concepts. Homes may be left or right versions. All dimensions are approximate. Actual usable space may vary from stated area. Structural/mechanical requirements may result in dimensional revisions and/or adjustments to layout. Plans and specifications are subject to change without notice. Exterior elevations are determined by Urbandale and may vary. See the Sales Consultant for closing date details. ENERGY STAR® is an official mark of Natural Resources Canada. Used with permission. E. & O. E. 29/01/2025

