

KELOWNA

2,769 SQ.FT.

44' DESIGN

PACIFIC SERIES

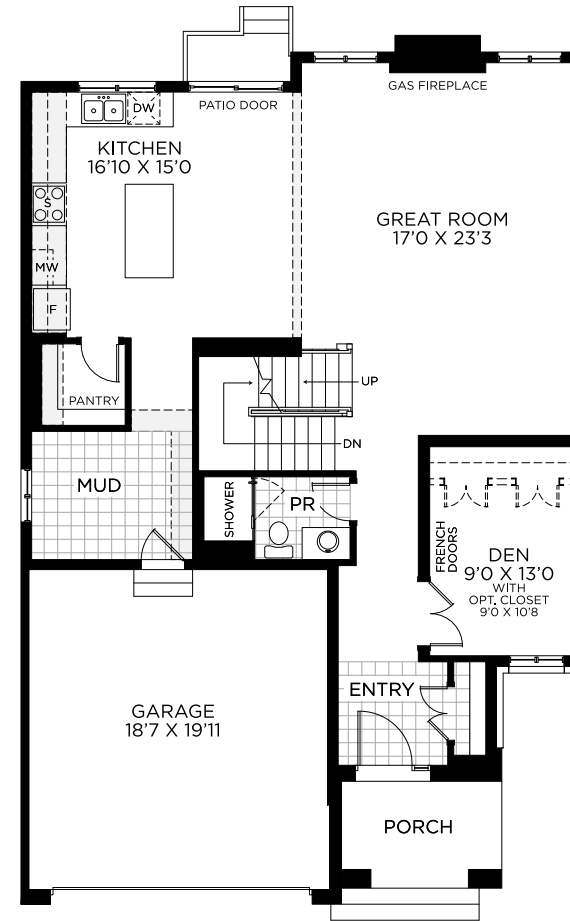
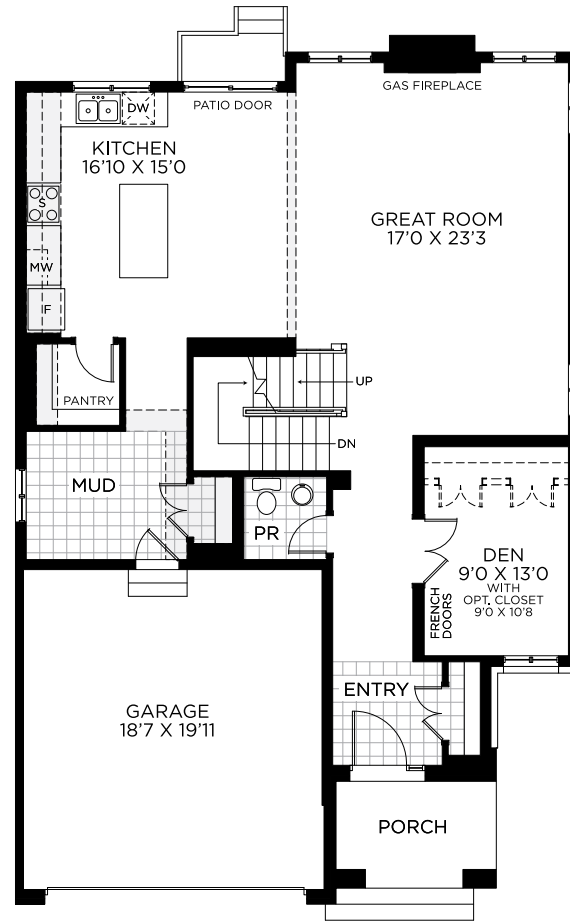


KELOWNA

2,769 SQ.FT.

44' DESIGN

PACIFIC SERIES



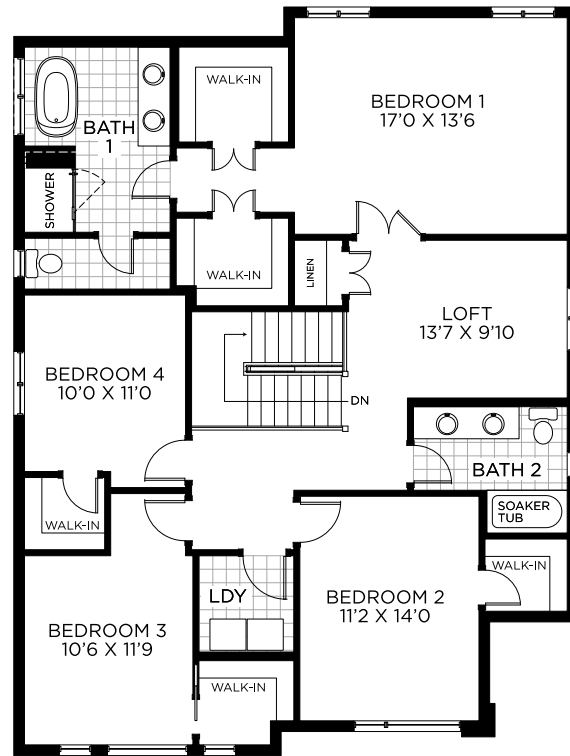
All illustrations are artist concepts and should be used as references only. Plans and specifications are subject to change without notice. All dimensions are approximate. Actual usable floor space may vary from the stated area. Structural/mechanical requirements may result in bulkheads, dimensional revisions, and/or minor adjustments that follow Taron regulations. Exterior steps and landings, including the garage, may vary with site grading. Brick sides and rears are subject to site specifications. Our homes are qualified under the CHBA's Net Zero Ready Home Labelling Program. Logo used with permission. E. & O. E. 28/02/2025

KELOWNA

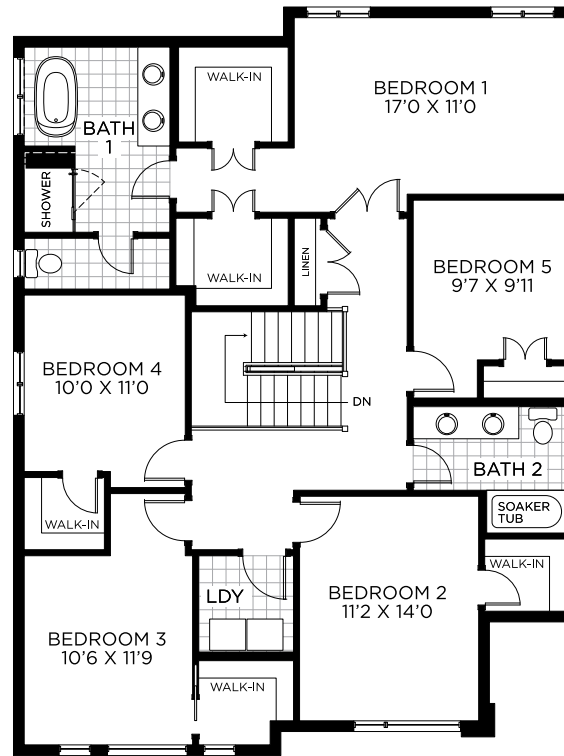
2,769 SQ.FT.

44' DESIGN

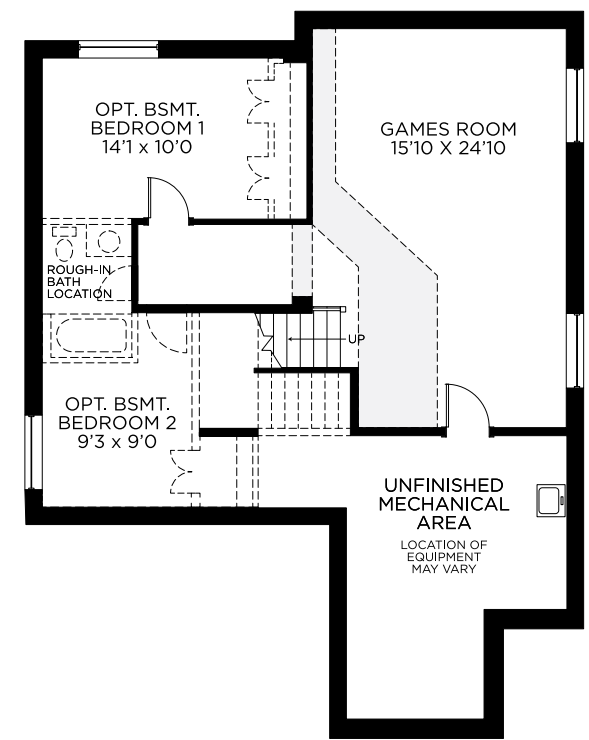
PACIFIC SERIES



BEDROOM FLOOR



OPT. BEDROOM FLOOR
5 Bedroom Layout



BASEMENT
Finished Area 525 sq.ft.

All illustrations are artist concepts and should be used as references only. Plans and specifications are subject to change without notice. All dimensions are approximate. Actual usable floor space may vary from the stated area. Structural/mechanical requirements may result in bulkheads, dimensional revisions, and/or minor adjustments that follow Taron regulations. Exterior steps and landings, including the garage, may vary with site grading. Brick sides and rears are subject to site specifications. Our homes are qualified under the CHBA's Net Zero Ready Home Labelling Program. Logo used with permission. E. & O. E. 28/02/2025