



SANTA MARIA

2,534 SQ FT.

RIVERSIDE SOUTH

369 Mango Street
Block 24 | Phase 117-1
Lot 85 | End Unit

\$884,900

Standard 4 Bedroom and 2.5 Bath with Loft
layout includes

- \$2K in structural and electrical upgrades
- Oak hardwood staircase from main to bedroom floor
- 36" Linear Fireplace
- Free standing tub in Bath 1
- 3x5 dual threshold shower in Bath 1

Select Your Finishes at the Urbandale Design Centre

Design Centre Consultants will guide you through Urbandale's extensive range of finishes, and customize your home's interior to suit your style with a

10K Design Centre BONUS!

Contact

Leigh-Ann Shearer | Sales Consultant
E: riversouth@urbandale.com
P: 613-822-2190



All illustrations are artist concepts. Homes may be left or right versions. All dimensions are approximate. Actual usable space may vary from stated area. Structural/mechanical requirements may result in dimensional revisions and/or adjustments to layout. Plans and specifications are subject to change without notice. Exterior elevations are determined by Urbandale and may vary. See the Sales Consultant for closing date details. ENERGY STAR® is an official mark of Natural Resources Canada. Used with permission. E. & O. E. 29/01/2025



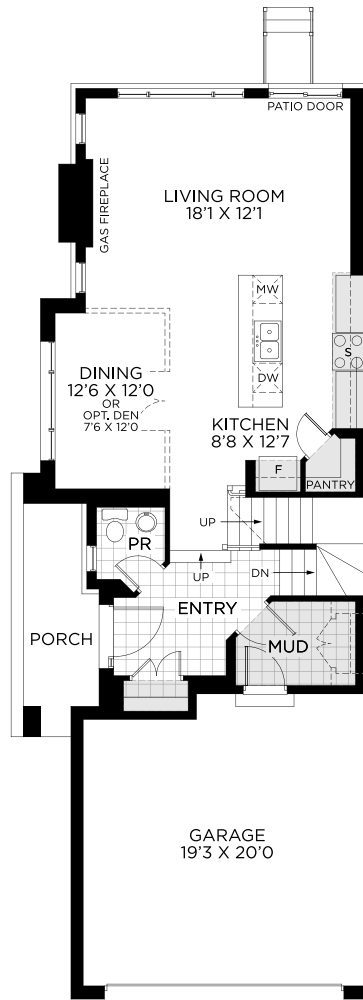
SANTA MARIA

2,534 SQ. FT.

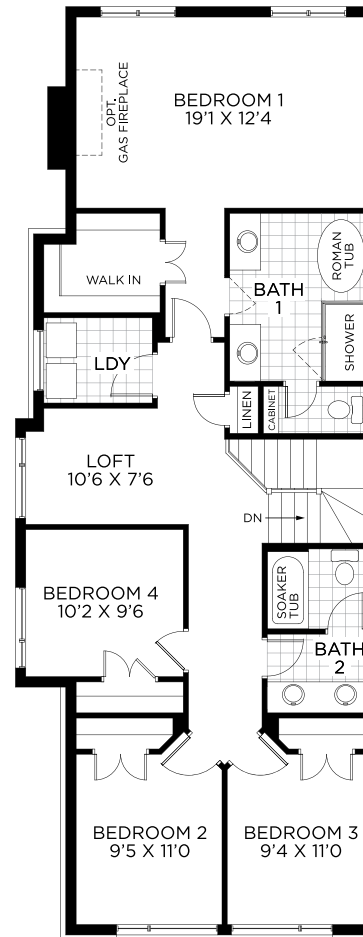
RIVERSIDE SOUTH

369 Mango Street
Block 24 | Phase 117-1
Lot 85 | End Unit

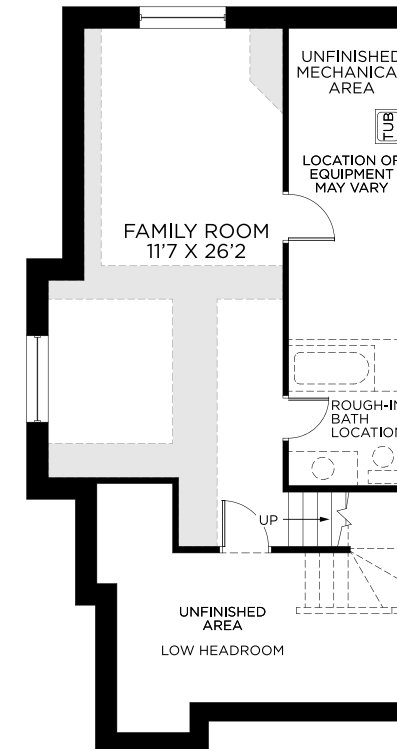
FLOORPLANS



GROUND FLOOR



BEDROOM FLOOR



BASEMENT
Basement Finished Area: 413 sq.ft.



All illustrations are artist concepts. Homes may be left or right versions. All dimensions are approximate. Actual usable space may vary from stated area. Structural/mechanical requirements may result in dimensional revisions and/or adjustments to layout. Plans and specifications are subject to change without notice. Exterior elevations are determined by Urbandale and may vary. See the Sales Consultant for closing date details. ENERGY STAR® is an official mark of Natural Resources Canada. Used with permission. E. & O. E. 29/01/2025

