

WEST BAY

1,746 SQ. FT.

RIVERSIDE SOUTH

806 Acai Way
PACIFIC SERIES | 44' LOT
Phase 117-1 | Lot 47



**SOLAR
ENERGIZED
PACKAGE**



\$1,043,900

Standard 2 Bedroom and 2 Bath
layout includes

- \$8500 in structural and electrical upgrades
- Oak hardwood staircase from main to basement
- 3x5 shower in Bath 1
- Finished Basement Bath with 3x5 shower

Select Your Finishes at the Urbandale Design Centre

Design Centre Consultants will guide you through Urbandale's extensive range of finishes, and customize your home's interior to suit your style with a **30K Design Centre BONUS!**

Net Zero Ready Home

Your new home features
Urbandale's Solar Energized Package: A 5 Kilowatt Rooftop Solar Panel System.

In addition to solar panels and a 200 amp service, your Urbandale home will feature a system of standard features & third party certification designed to enhance comfort and efficiency.

Contact

Leigh-Ann Shearer | Sales Consultant
E: riversouth@urbandale.com
P: 613-822-2190

All illustrations are artist concepts. Homes may be left or right versions. All dimensions are approximate. Actual usable space may vary from stated area. Structural/mechanical requirements may result in dimensional revisions and/or adjustments to layout. Plans and specifications are subject to change without notice. Exterior elevations are determined by Urbandale and may vary. See the Sales Consultant for closing date details. ENERGY STAR® is an official mark of Natural Resources Canada. Used with permission. E. & O. E. 29/01/2025



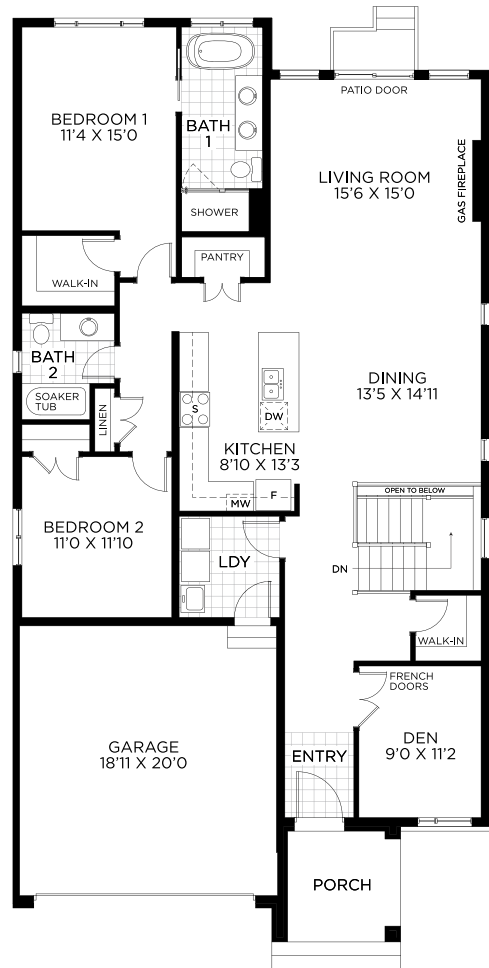
WEST BAY

1,746 SQ. FT.

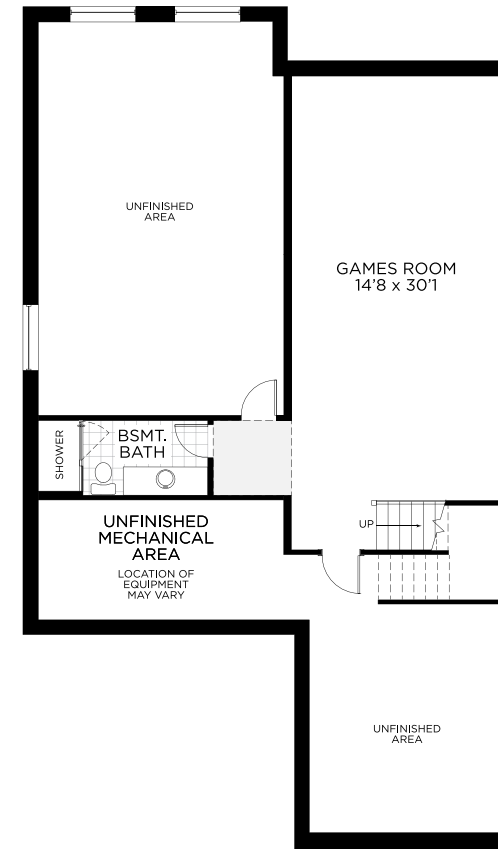
RIVERSIDE SOUTH

806 Acai Way
PACIFIC SERIES | 44' LOT
Phase 117-1 | Lot 47

FLOORPLAN



LIVING LEVEL



BASEMENT - FINISHED AREA 525 SQ.FT.